



Research and Documentation Centre

Effectiveness of the Dutch Alcohol Ignition Interlock program

Martine Blom

Research and knowledge centre for
the Ministry of Justice and Security



Social context



2022

Population: 17,8 million

Traffic fatalities: 737
alcohol related: ±88-170

Serious injuries: 6,800



Dutch approach to DUI

- › Criminal prosecution
 - Financial sanction
 - Community service order
 - Prison sentence
 - Driving ban

- › Administrative procedure *in parallel with criminal proceedings*
 - › Educational measure
 - › Fitness-to-drive test
 - › Alcohol Ignition Interlock program





Dutch Alcohol Ignition Interlock Program

- > Introduced in December 2011
- > BAC 1.3 - 1.8‰
- > Program components
 - > Interlock device
 - > Educational program
 - > Behavioral feedback
 - > Costs: >4,000 euros
- > Mandatory measure
- > Terminated in September 2016 because of legal obstacles





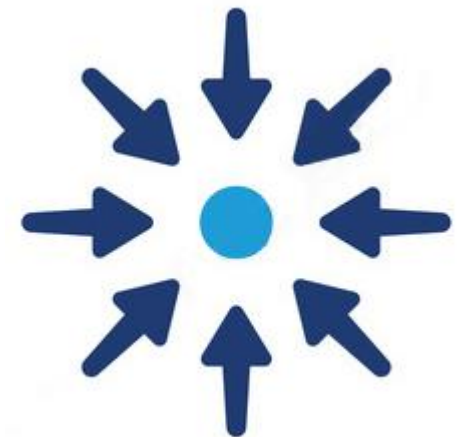
Dutch effectstudies

Objective

- > Evaluating the effectiveness of the Dutch Alcohol Ignition Interlock Program

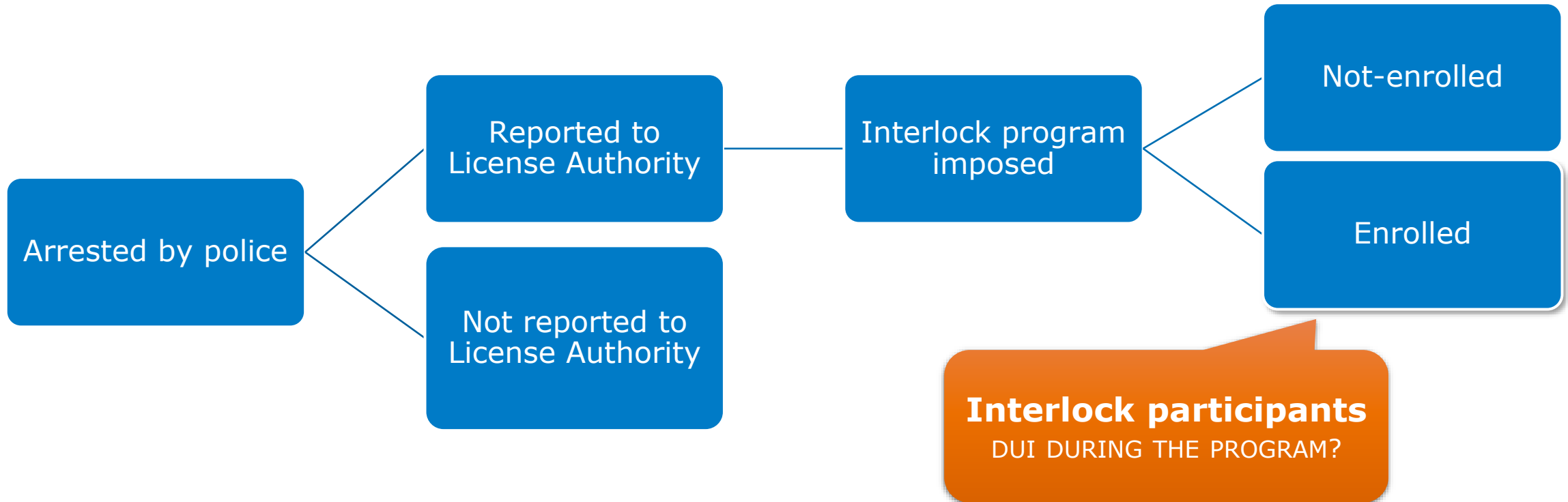
Main question

- > Does the interlock program contribute to reducing DUI recidivism?
 - > During the program
 - > After completing the program



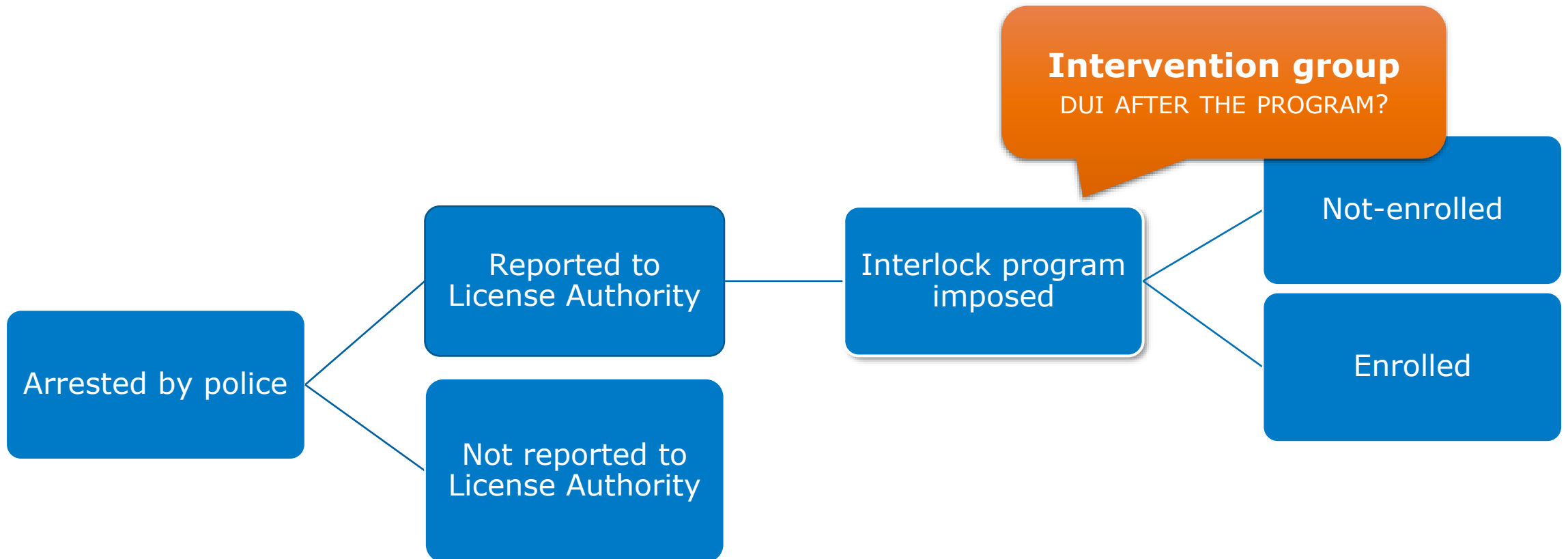


Research group 1



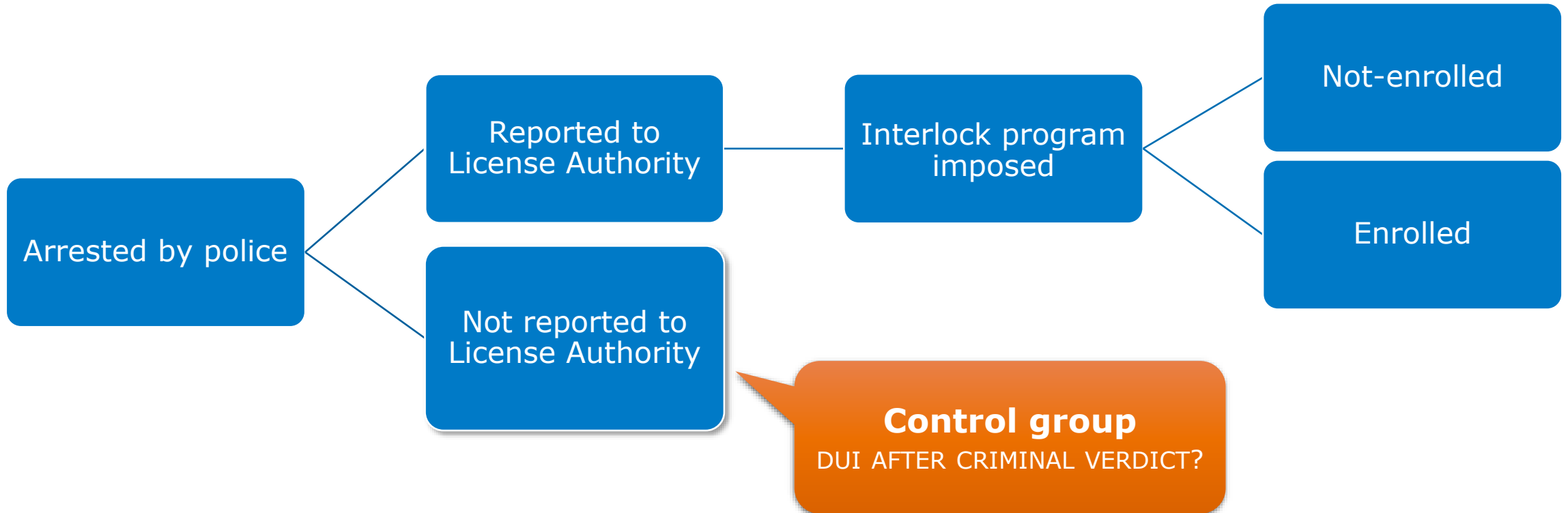


Research group 2





Research group 3





Data

Intervention data

- › Information system MOVE
- › Information on reported drivers, offenses and administrative cases
- › Used to select the intervention groups and to obtain background characteristics

(Re)conviction data

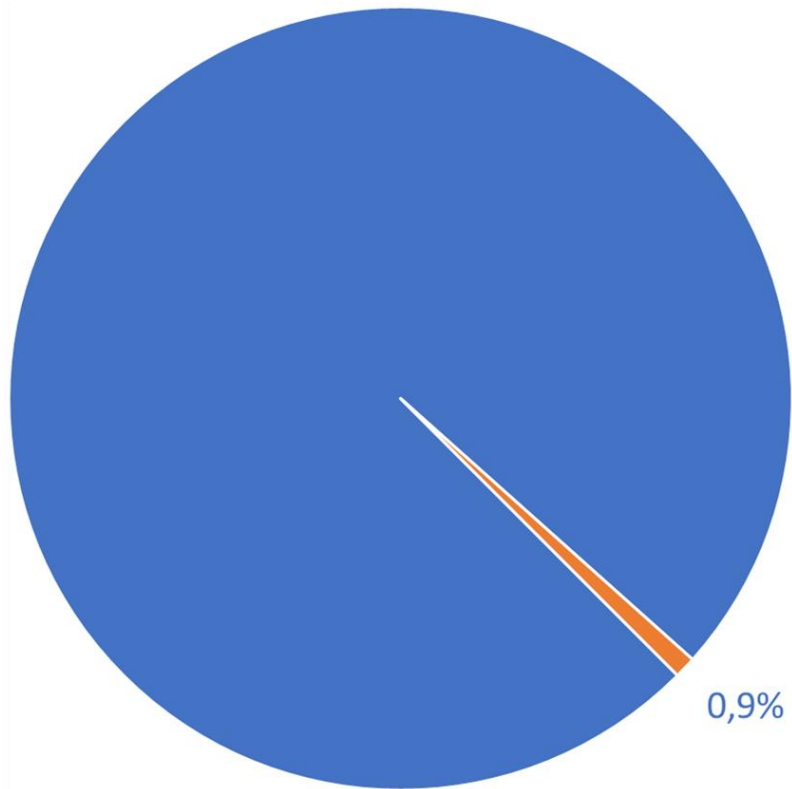
- › Research and Policy Database Judicial Data
- › Information on prosecuted offenders, offenses and criminal cases
- › To enable scientific research
- › Used to measure recidivism, to select the control group and to obtain background characteristics



Results



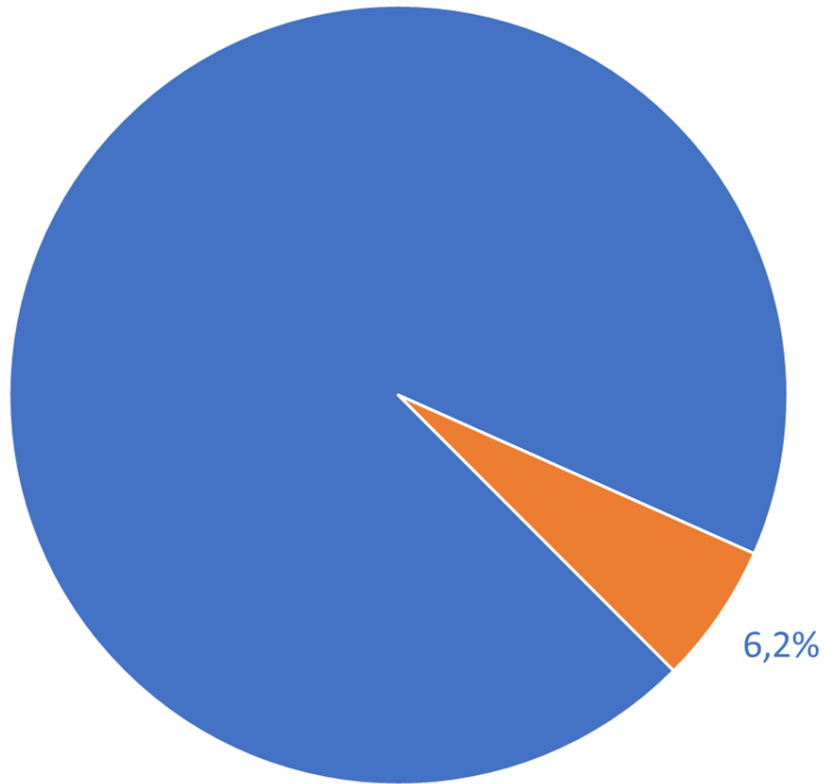
DUI recidivism during the interlock program



Less than 1% of the interlock participants recidivate during the program



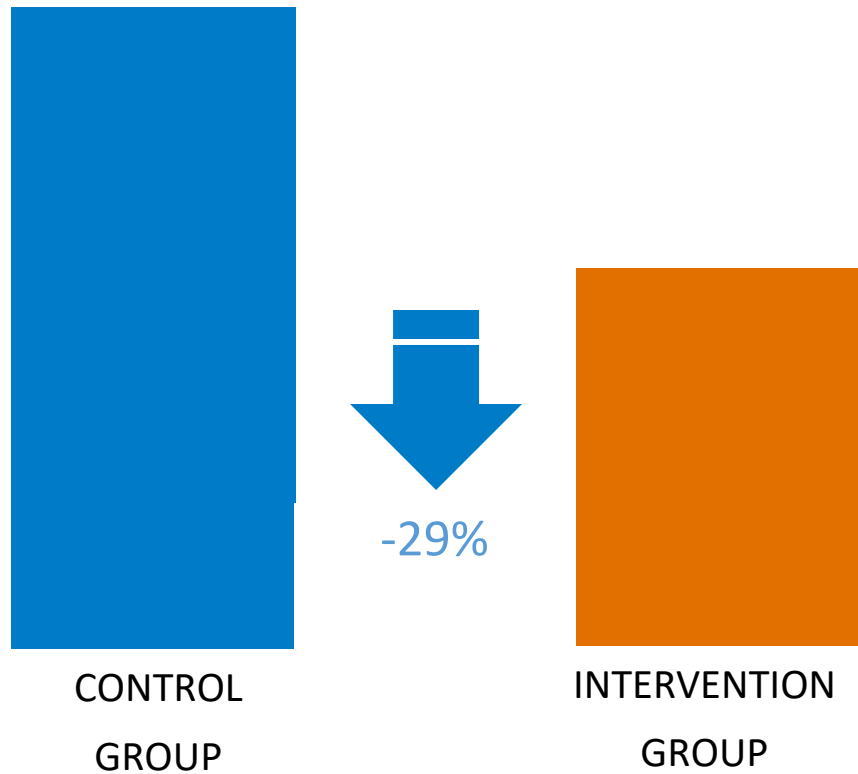
DUI recidivism after the interlock program



6% of the intervention group recidivates with 2 years after the program



Effect of the interlock program



Interlock program is associated with a 29% lower risk of DUI recidivism



Differential effects for subgroups

- > Gender
- > Country of birth
- > Age
- > Driving experience
- > Age of onset
- > Prior convictions (DUI/traffic/other)





Differential effects for subgroups

- › Late starters benefit more from the interlock program than early starters
- › Interlock program has no effect on early starters





Limitations

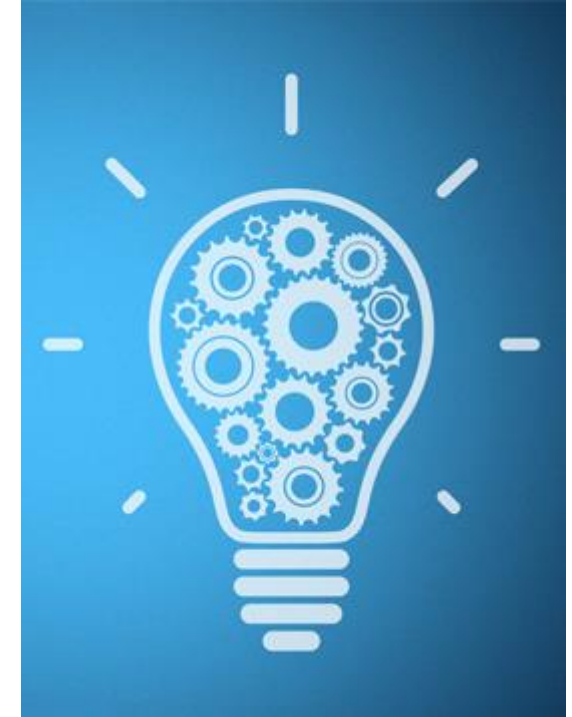
- › Only crime that comes to the attention of the police and justice system is included
- › Possible selection bias by police





In conclusion

- › The Dutch program works 😊
 - Virtually no recidivism during the program
 - Reduction persists after removal of the interlock device
- › Solution for legal obstacles
- › Increase the participation rate





THANK YOU



Martine Blom
m.blom@wodc.nl
www.wodc.nl