

# DRINK DRIVING IN THE EUROPEAN UNION

Alcohol Interlock Symposium| 19 September 2023



Francesca Podda  
Project Manager



- ✓ A science based approach to road safety
- ✓ Secretariat in Brussels
- ✓ 57 member organisations from across Europe
- ✓ More than 200 experts contributing to ETSC's work
- ✓ The European Commission, Member Organisations, Member States and corporate sponsors are funding our work



Monitoring EU transport  
safety policy



Road Safety  
Performance Index  
(PIN)

Ranking EU countries'  
performances

EU ROAD SAFETY  
EXCHANGE

SAFE  
SOBER



SMART



SOBER MOBILITY ACROSS ROAD TRANSPORT



DRUG DRIVING

# 20,678

---

people died in road traffic  
in the EU in 2022

# DRINK-DRIVING IN THE EUROPEAN UNION



- Up to **1.5 - 2% of KM driven** in the EU are driven with an illegal Blood Alcohol Concentration (BAC);
- Of all road deaths in the EU, **25%** are alcohol-related;
- Alcohol related crashes are the **leading cause of death** in the age group 16-25

# DRINK-DRIVING IN THE EUROPEAN UNION

31%



of drivers reported to have driven after  
consuming alcohol in the last year

\*ESRA (2016)

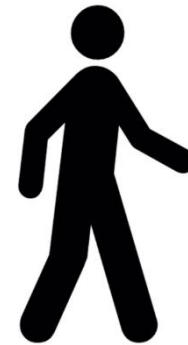
# DRINK-DRIVING IN THE EUROPEAN UNION

At least **4,000** deaths  
could have been  
prevented by eliminating  
drink driving



# DRINK-DRIVING DATA COLLECTION

Every driver, rider and walker involved in a fatal and serious collision should be tested systematically





# DRINK-DRIVING DATA COLLECTION

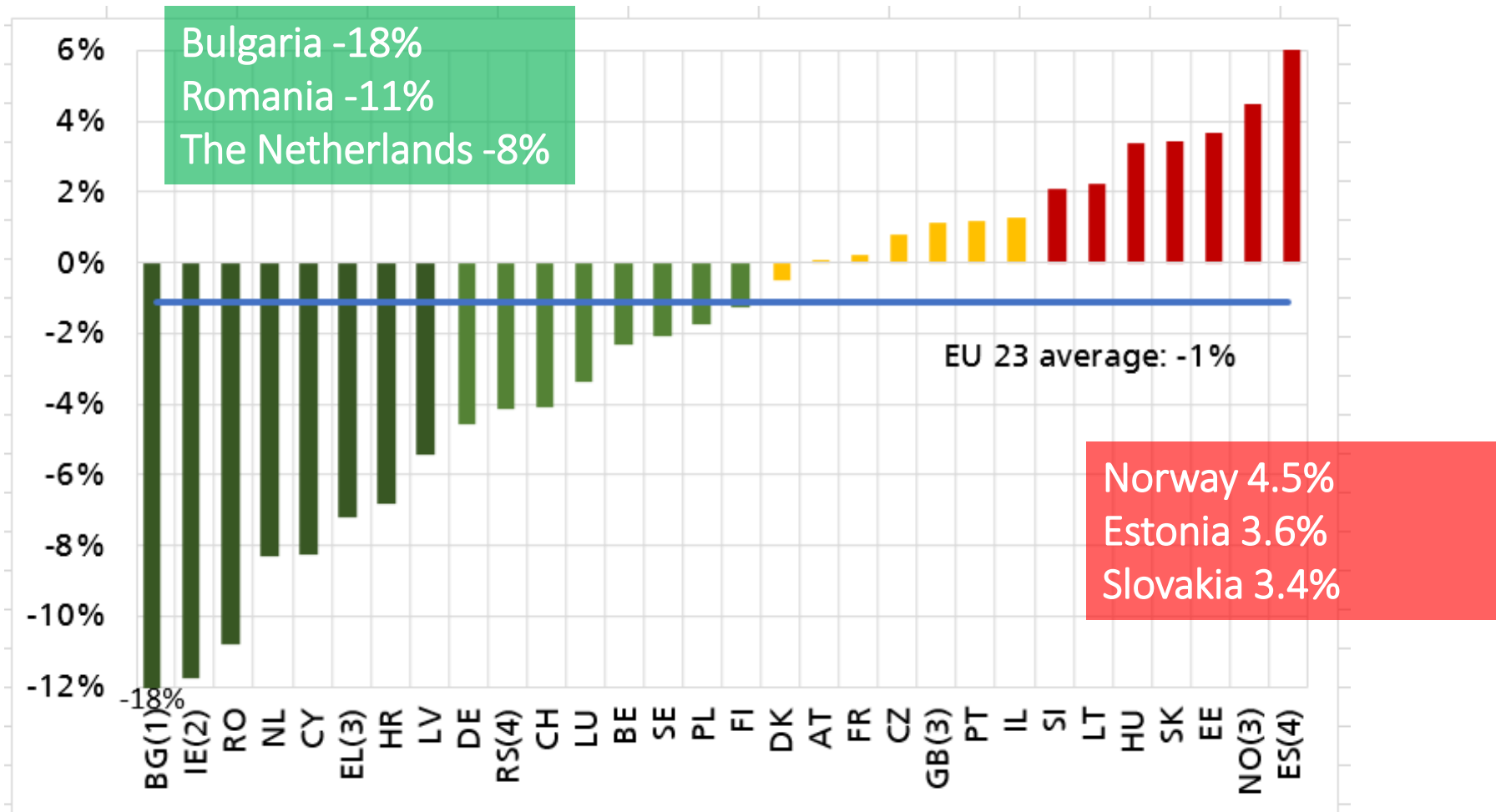


- Different definitions
- Road users not tested systematically
- Legal constraints
- Police data does not give a full picture

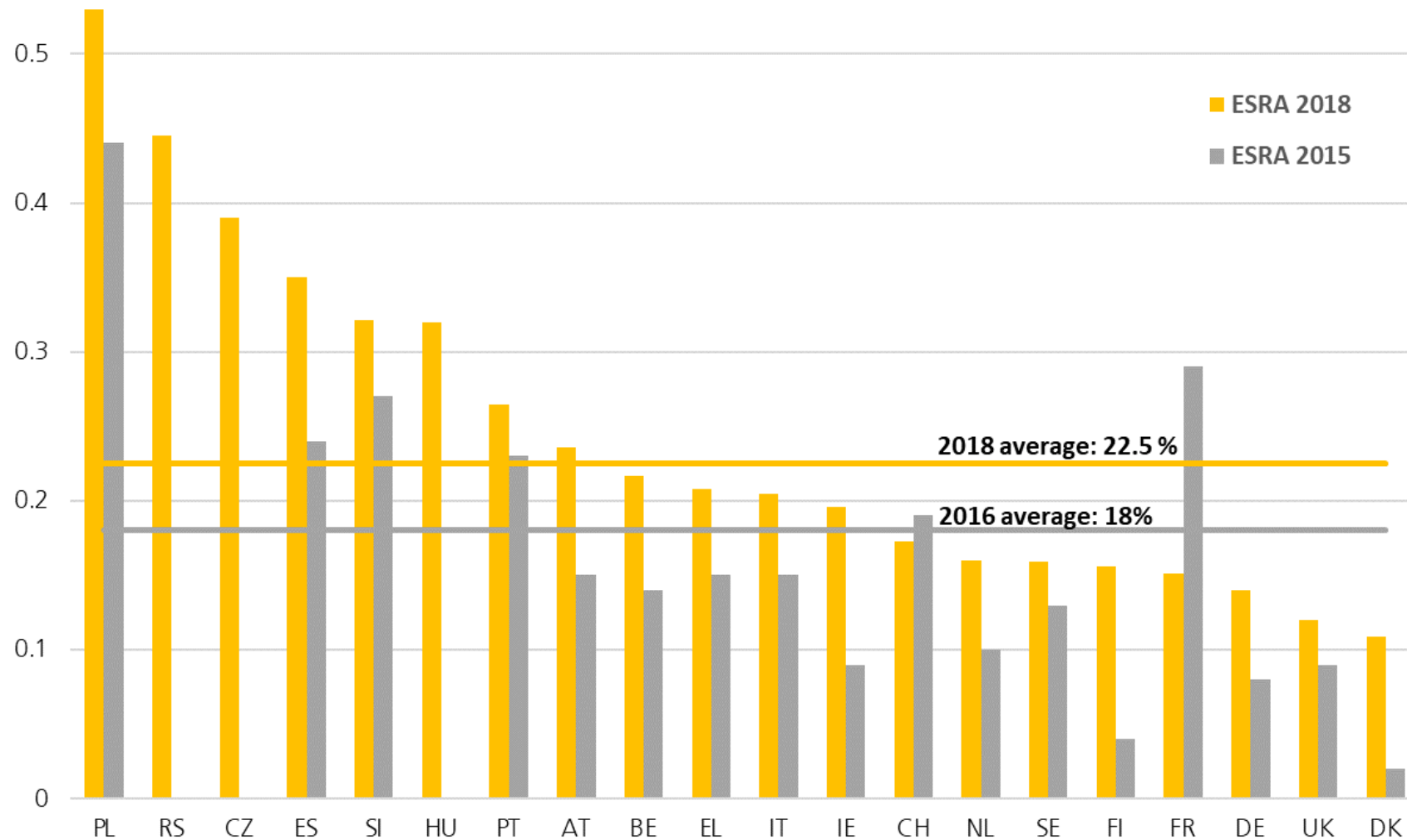


# PROGRESS IN TACKLING DRINK DRIVING 2011 – 2021

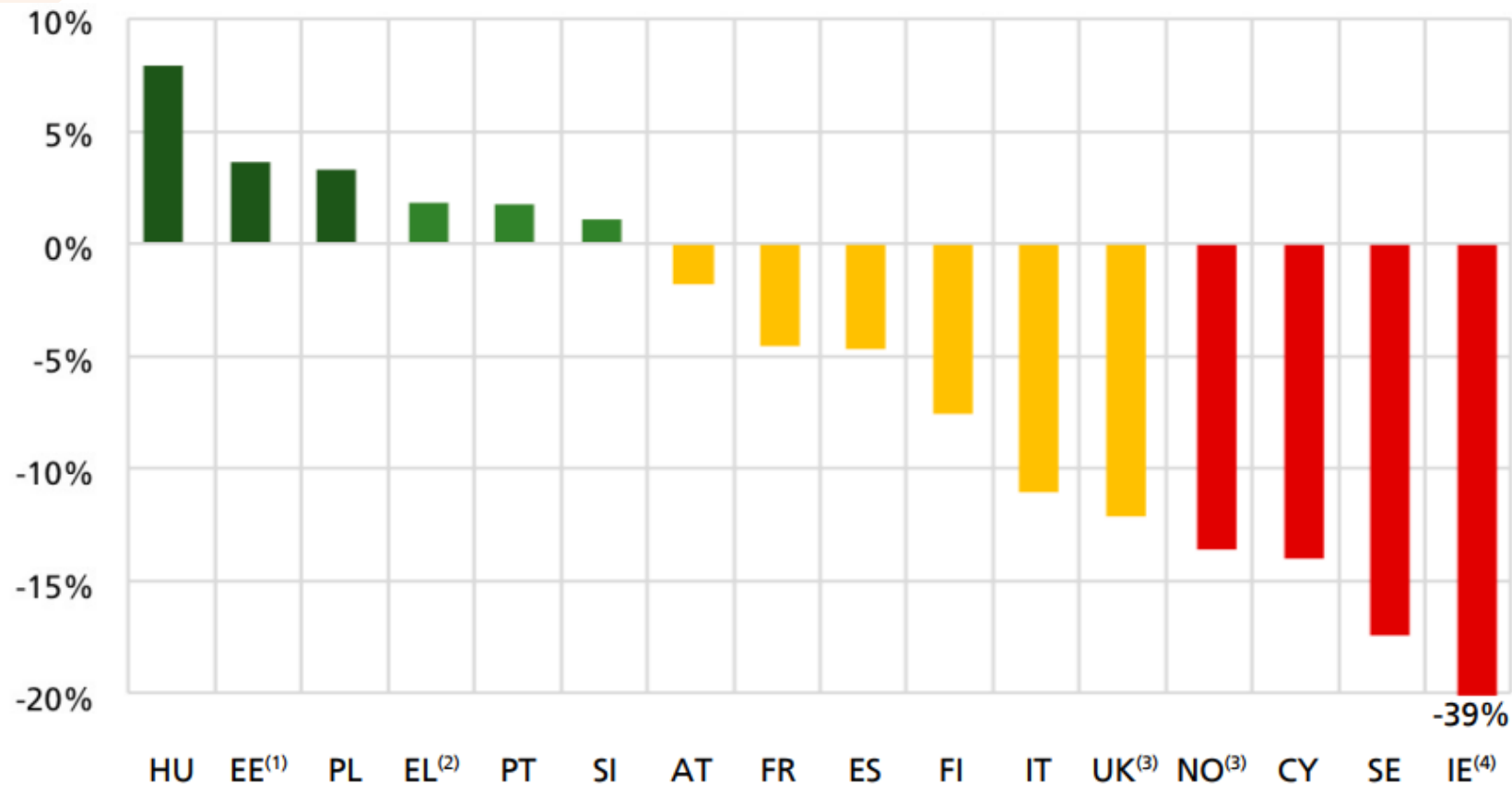
Difference between the average annual percentage change in deaths attributed to drink driving and corresponding change in other road deaths



# ONLY 22% OF ROAD USERS THINK THEY ARE VERY LIKELY TO BE TESTED FOR DRINK-DRIVING ON A REGULAR JOURNEY



# Drink-driving – alcohol breath checks (2011-2021)



Average annual change in the number of alcohol roadside breath checks per 1000 population over the period 2011-2021

# Drink-driving – alcohol breath checks (2011-2021)

[illegible]

# ALCOHOL INTERLOCKS & REHABILITATION PROGRAMMES

**10%** of all drink-driving offenders are involved in 2 / 3 of all alcohol-involved crashes



## Alcohol interlocks are:

- An effective measure for hard-core drink-driving offenders
- An effective prevention tool

## LEGISLATION NEEDED

To maximise the effect on road safety, alcohol interlock programmes for drink drivers offenders should be compulsory and placed under administrative law.

# ALCOHOL INTERLOCKS PROGRAMMES IN THE EU



## EUROPEAN MAP

- **Offender programmes:** Austria, Belgium, Finland, France, Lithuania, Poland, Sweden
- **Law in preparation:** Italy
- **Feasibility study:** UK
- **Cost-benefit analysis:** Ireland

# STRENGTHS AND WEAKNESSES

A. Effective programmes showed **positive impacts** such as:



- a) securing the jobs of people who relied on being able to drive for work;
- b) making drivers aware of their responsibilities;
- c) helping offenders remain integrated in society (although participation is sometimes perceived as a constraint);



B. **Two key elements** for a successful programme:

- a) Rehabilitation measures
- b) Affordable costs



# ALCOHOL INTERLOCKS IN COMMERCIAL TRANSPORT



**TRANSPORTEZ TRANQUILLE**



Le 1<sup>er</sup> septembre 2015,  
**l'éthylotest anti-démarrage**  
et la ceinture de sécurité  
sont OBLIGATOIRES dans tous les autocars.

N'attendez pas pour vous équiper en EAD  
[www.developpement-durable.gouv.fr/ead2015](http://www.developpement-durable.gouv.fr/ead2015)

Le défaut d'équipement est une infraction

## Matthews scoop BBC into

Cochi Hire Company's alcohol interlock system featured on



Matthews was the only company in the world to have alcohol interlocks installed on every coach and support vehicle. Matthews is the only company in the world to have alcohol interlocks installed on every coach and support vehicle. Matthews is the only company in the world to have alcohol interlocks installed on every coach and support vehicle.

**Take a decisive step to prevent drink-driving in your company**



Preventing drivers from turning on the motor if they are affected by alcohol, the Dräger alcoholock is an efficient security tool as well as a great way for companies to send a signal of moral responsibility.

Although there is no law in Denmark requiring drivers to have a breath analyser on board, the Dräger alcoholock has become a popular choice for companies. It is a small, portable device that can be used in a variety of situations. It is a small, portable device that can be used in a variety of situations.

Dräger alcoholock is an efficient security tool as well as a great way for companies to send a signal of moral responsibility.

**Golden contract!**  
Coach Hire Company lands Olympic transport deal



Matthews was the only company in the world to have alcohol interlocks installed on every coach and support vehicle. Matthews is the only company in the world to have alcohol interlocks installed on every coach and support vehicle. Matthews is the only company in the world to have alcohol interlocks installed on every coach and support vehicle.

**FORBRUG & LIV**  
Bolg Sundhed Digitalt Forbrug Biler Livsstil

Arriva: Busserne er begyndt at køre pænere

Antallet af 'hændelser' målt af sensorer i busserne er faldet med 67 procent.



In commercial vehicles as an extension of the vehicle safety systems and demonstrate the company's commitment to both driver and public safety.

# ALCOHOL INTERLOCKS IN COMMERCIAL TRANSPORT



## FRANCE:

Buses and coaches are fitted with alcohol interlocks. Coaches assigned to public transport for children have been equipped with alcohol interlock since 2010 and all coaches since 2015.



## FINLAND:

Since August 2011, mandatory in school and day care transportation (if transport organised by a municipality, school, state etc)

# ALCOHOL INTERLOCK TECHNOLOGY

## Promoting Alcohol Interlocks

- In rehabilitation programmes
  - High level and recidivist offenders
  - Alcohol addicted as long as this is combined with medical supervision
- As a quality assurance mechanism in commercial transport
  - In school buses
  - Emergency
  - Day care transportation
  - Others: public procurements (safety culture..)

# FIND OUT MORE



European Transport Safety Council

[www.etsc.eu](http://www.etsc.eu)

 [@etsc\\_eu](https://twitter.com/etsc_eu)

Find out more

Francesca Podda  
Project Manager

Watch our Videos



Interactive map on drink-driving policies online

